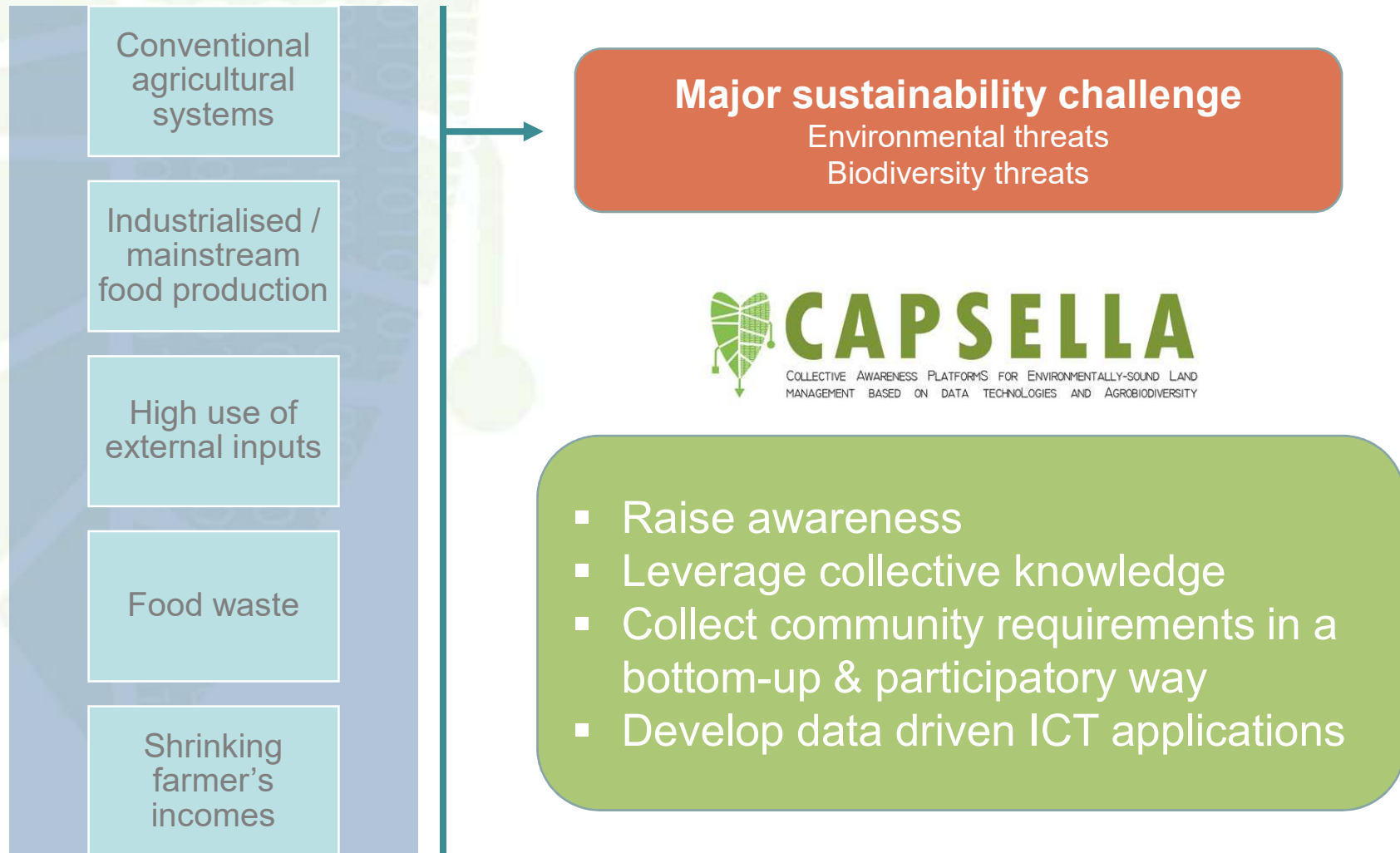


Collective **A**wareness **P**latformS for **E**nvironmentally-
sound **L**and management based on data
techno**L**ogies and **A**grobiodiversity

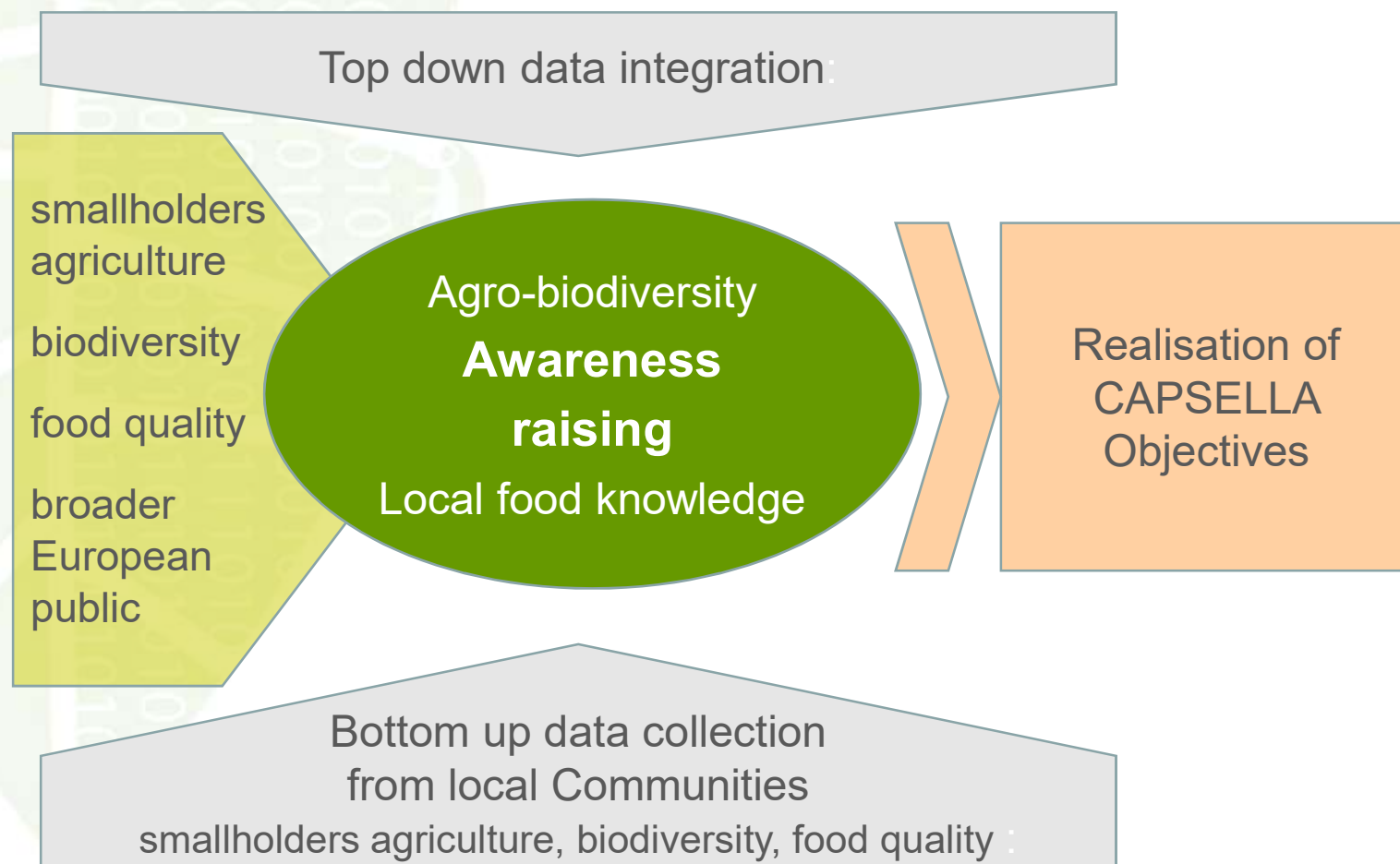
From Farm to Fork: Feeding the World with Data

Eleni Toli, ATHENA Research Center

Motivation & Aims



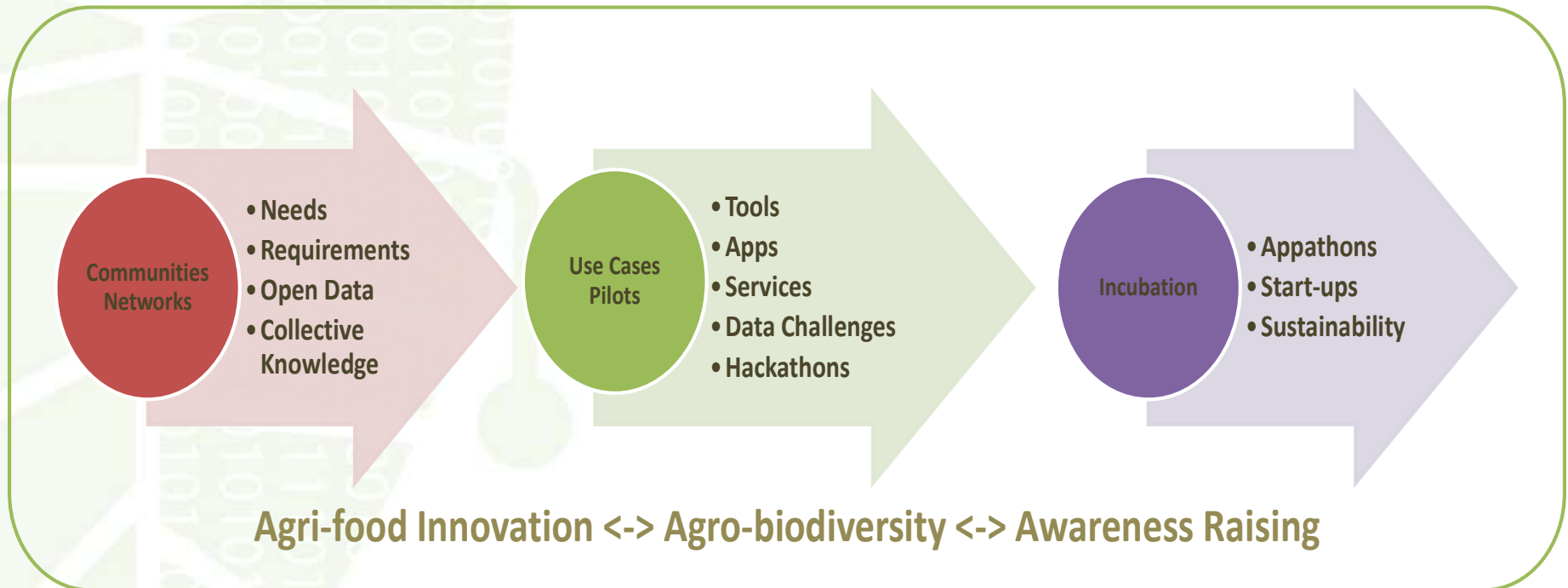
Community-driven project and participatory design



CAPSELLA Objectives

- └ Develop a cloud based platform to support community based initiatives
- └ Build from scratch open data repositories on regional agrobiodiversity
- └ Build upon and enhance existing data sets on the agrobiodiversity and food domains
- └ Develop a number of community-driven data powered ICT solutions
- └ Run pilots with communities
- └ Run incubation activities for selected pilots

CAPSELLA main pillars



Awareness Raising
Workshops
Collection
requirement events
Hackathons

Meetups
Hackathons
Open training days

Hackathon
Entrepreneurship
contests
Pre-incubation training
bootcamp

CAPSELLA Scenarios

Three community-driven use cases / scenarios that will be addressed following an iterative approach

The Infrastructure

- **“Field scenario”** addressing ecological intensification and functional agro-biodiversity in cropping systems;

The Input

- **“Seeds scenario”** addressing on-farm genetic diversity conservation and management, seed networks and informal seed systems;

The Output

- **“Food scenario”** addressing the food chain by bringing more transparency in the processes related to the production, distribution and consumption of quality food.

CAPSELLA Pilots

Small scale experimental trials with real users that will represent the targeted communities

Netherlands:
Precision
Farming pilot

Italy and Greece:
ICT tools for
farmers

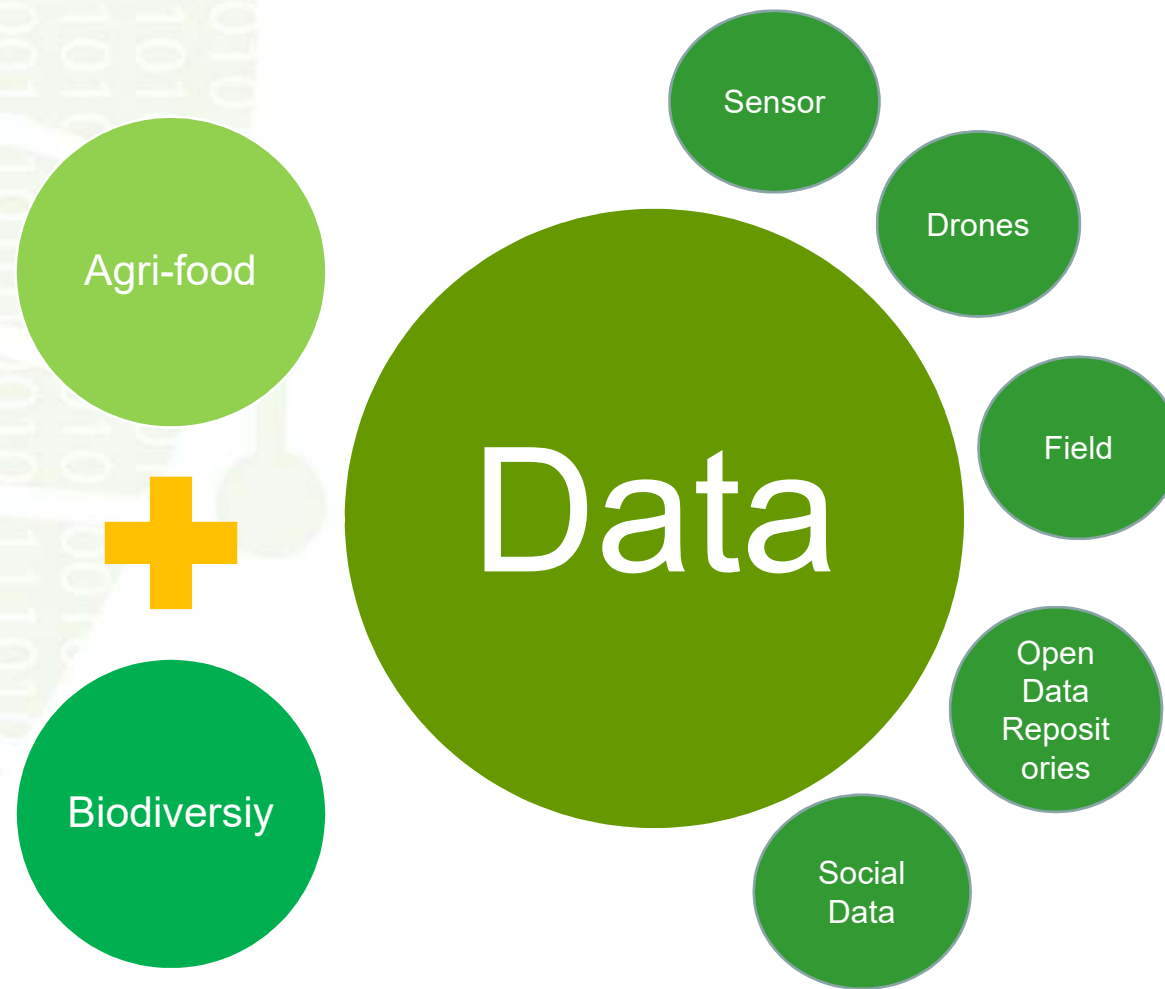
Czech Republic:
Personalised Food
System

Greece:
Personalised Food
System

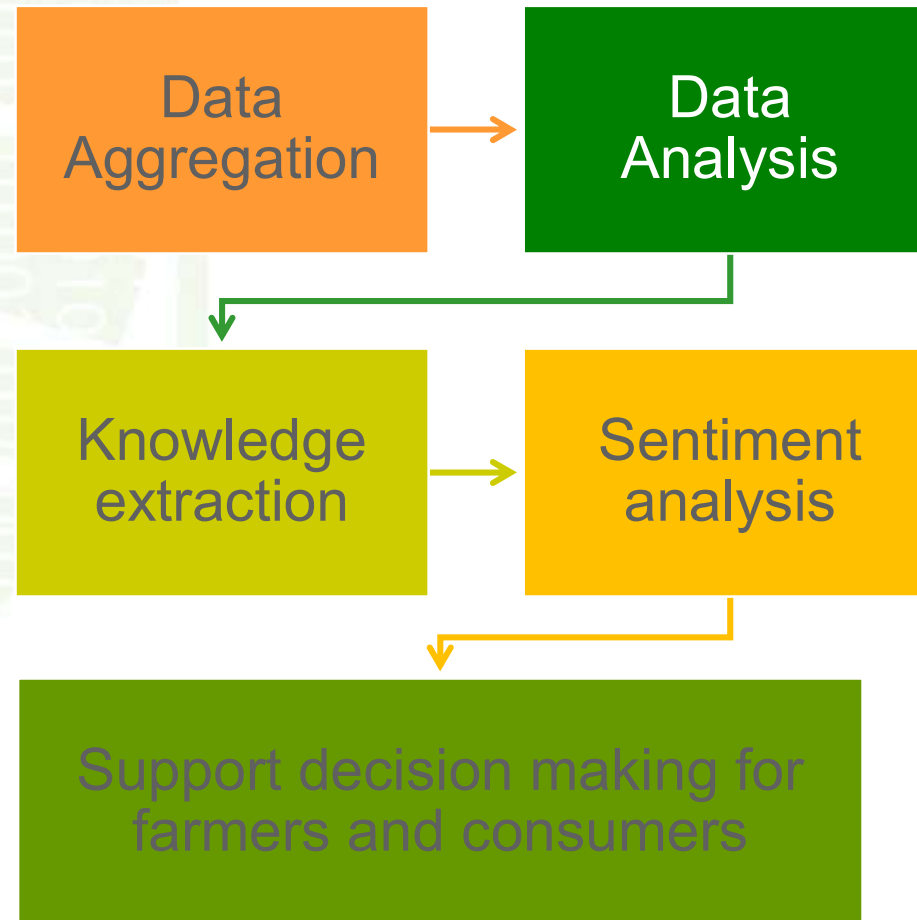
Greece:
Controlled trials for
Stevia Hellas
farmers'
association in
Lamia,



Data from and to the Communities



CAPSELLA Platform



Talking with the taxman about poetry

- How to talk with farmers about data?
- How to make them aware that they own data?
- How to collect the data?
- How to make the 'digested' data available to farmers?

CAPSELLA approach

On site

- Direct on-farm liaisons with farmers
- Liaison with farmer networks and associations

On line

- Community mapping
- Questionnaire

In
meetings

- Open Training days
- Workshops

CAPSELLA 1st Workshop

- May 30th and 31st
- Floriddia Organic Farm & SIAF, Volterra, Italy
- Presentations, Practical field session, round table discussions, parallel groups
- Farmers, Farmers Networks, Consumers Networks, Biodiversity, Agri-food and Data Experts, Researchers, EU projects
- Contact: workshop.capsella@sssup.it



Project Facts

- **Starting Date:** January 2016
- **Duration:** 30 months
- **Grant Agreement No.:** 688813
- **Topic:** ICT-10-2015 Collective Awareness Platforms for Sustainability and Social Innovation
- **Consortium:**
 - ATHENA Research and Innovation Center in Information Communication & Knowledge Technologies, Greece (Project Coordinator)
 - Scuola Superiore di Studi Universitari e di Perfezionamento Sant' Anna, Italy
 - Aston University, United Kindom
 - Agroknow, Belgium
 - Rete Semi Rurali, Italy
 - Zephyr srl, Italy
 - We Deliver Taste s.r.o., Czech Republic
 - Zuidelijke Land- en Tuinbouworganisatie, Netherlands





<http://www.capsella.eu/>

[@Capsella12](https://twitter.com/Capsella12)

<http://www.facebook.com/capsellaproject/>

<http://www.linkedin.com/groups/8524214>